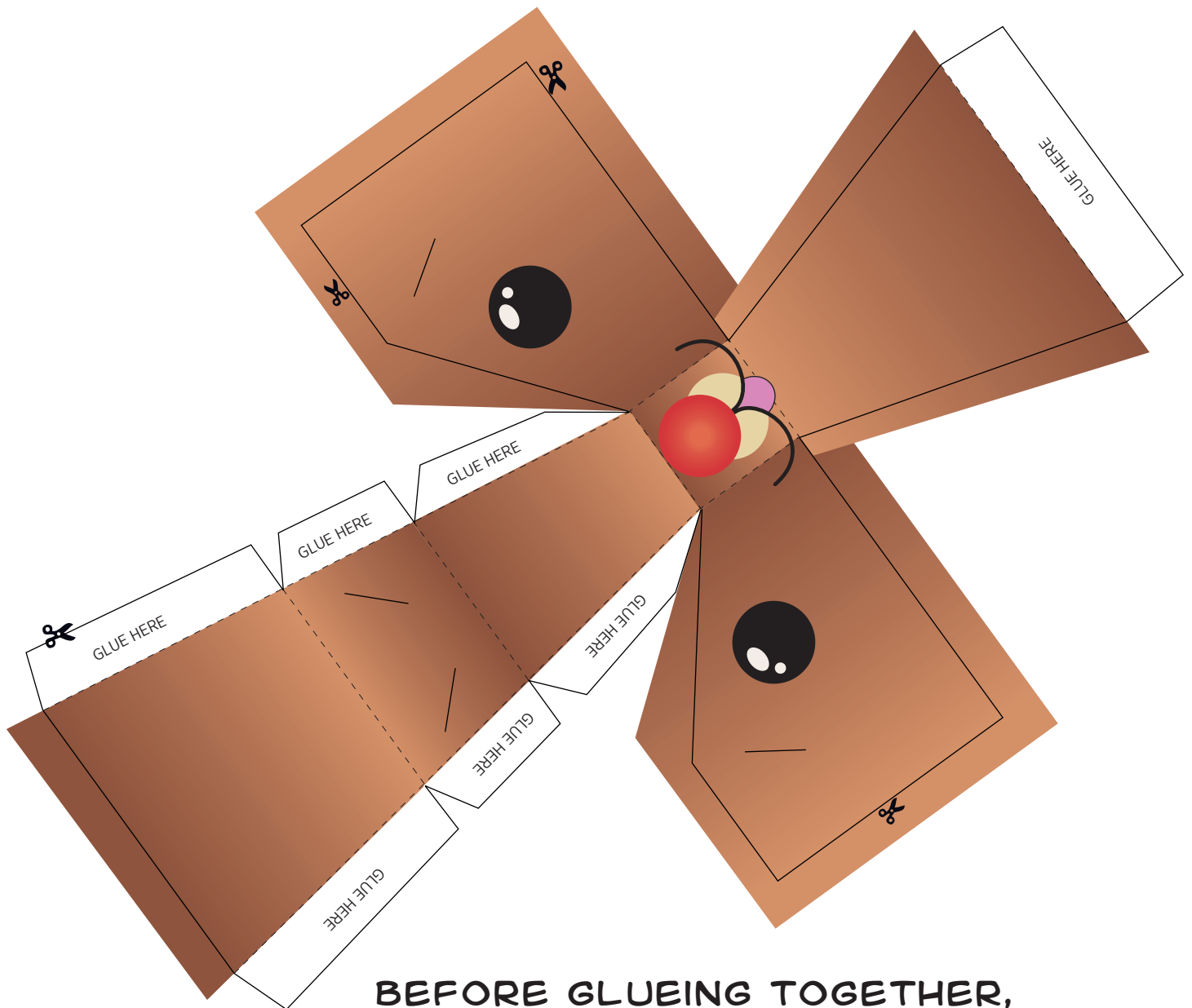


CREATE YOUR OWN REINDEER



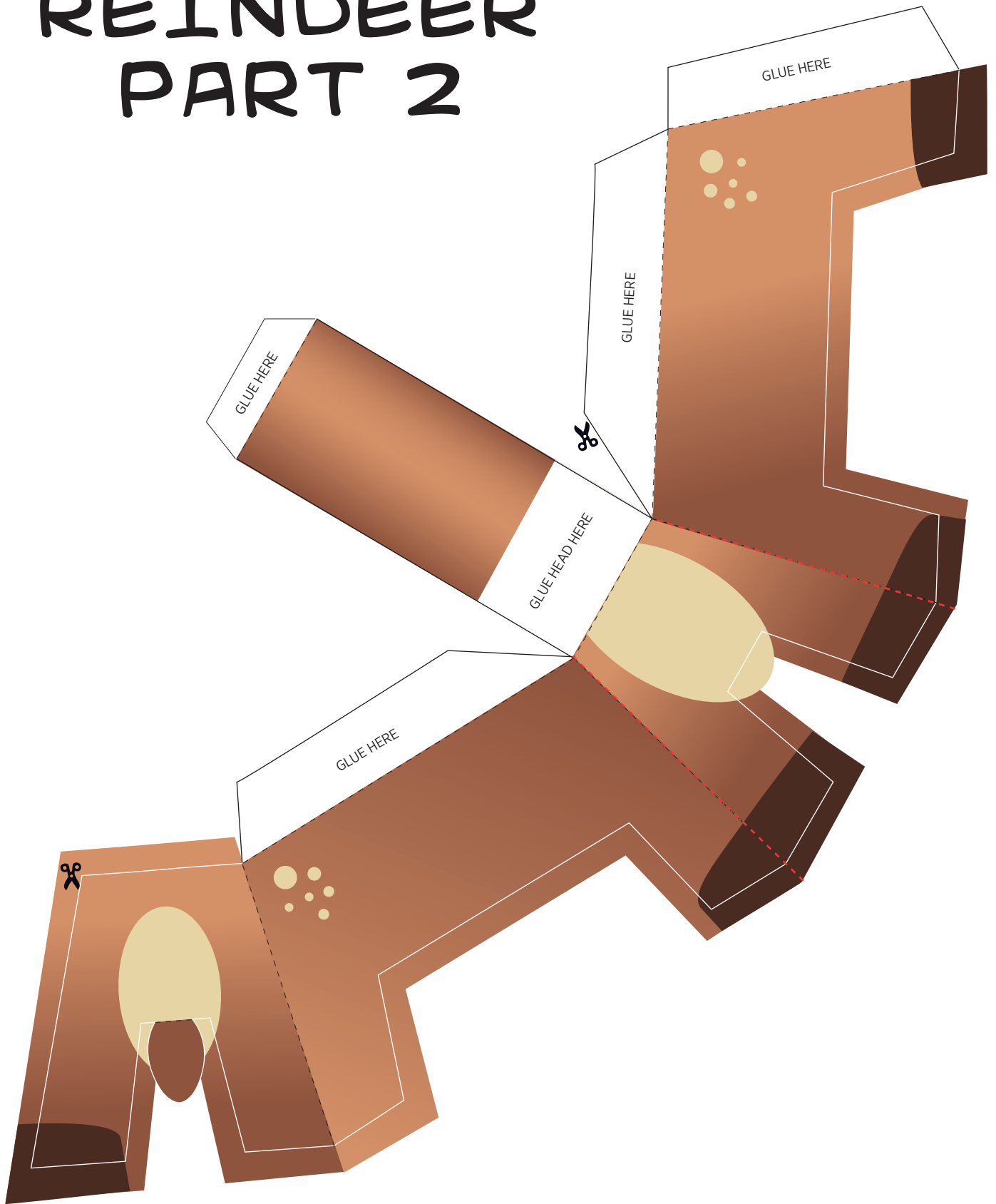
REINDEER PART 1



BEFORE GLUEING TOGETHER,
CUT THE FOUR LINES ON THE HEAD
AND ABOVE THE EYES TO INSERT
THE EARS AND THE ANTLERS
(PART 3).



REINDEER PART 2

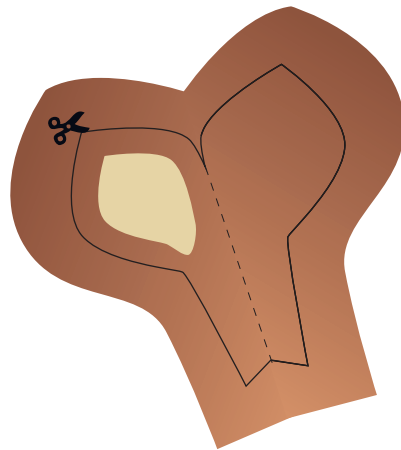
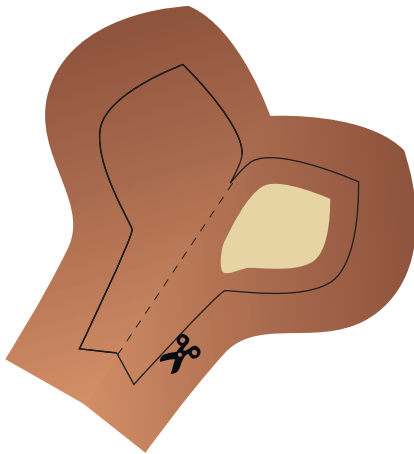
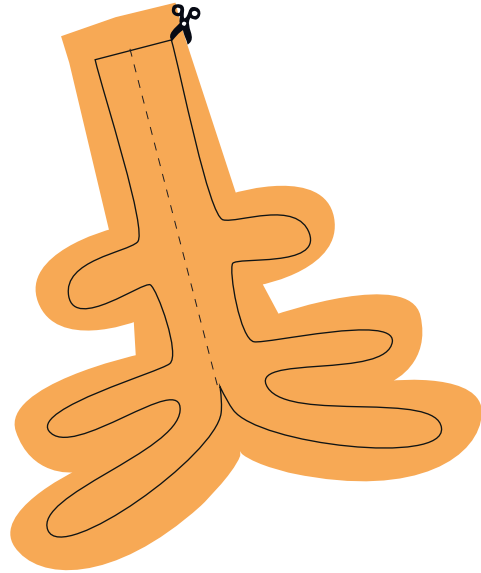
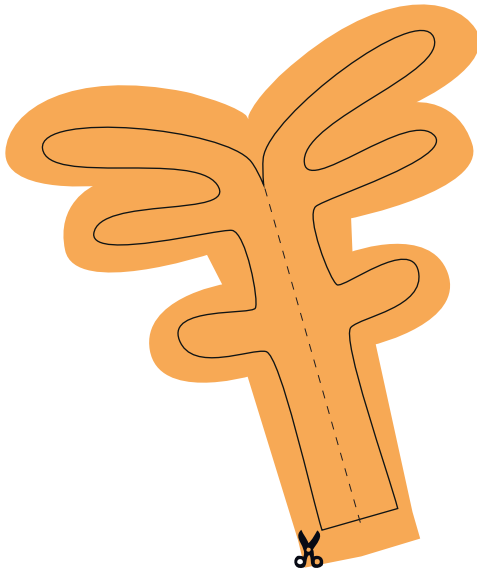


 **1.**
CUT OUT
ITEMS

 **2.**
FOLD
ITEMS

 **3.**
STICK ITEMS
TOGETHER

REINDEER PART 3



AFTER FOLDING THE PARTS,
GLUE THEM TOGETHER ON THE BACK
AND INSERT THEM INTO THE CUTS
ON THE HEAD.

