

CREATE YOUR OWN



PAPERCRAFT PETS 2 SKILL TOUR



The Secret Life of Pets 2 © 2019 Universal Studios. All Rights Reserved.

DOWNLOAD YOUR UHU PETS 2 SKILL TOUR
WWW.B2S-UHU.COM

UHU[®]
glues anything, anytime.

HOW TO CREATE YOUR PETS 2 SKILL TOUR

1.

WHAT YOU NEED:

- PRINT OUT OF PAPERCRAFT PARTS
- 2 PIECES OF SOLID CARDBOARD MEASURING 37 X 26 CM
- 1 PAPER KITCHEN ROLL
- 1 LARGER PLASTIC BALL
- TABLE TENNIS BALLS
- SCISSOR, NAIL SCISSOR AND RULER
- UHU STIC OR UHU TWIST & GLUE

INFORMATION:

_____ CUT
 ----- FOLD



2.



CUT OUT ALL YOUR SKILL TOUR PAPERCRAFT ITEMS.

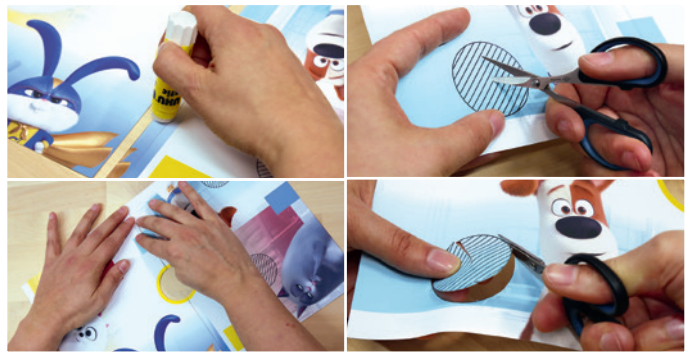


3.



GLUE PLAYGROUND PART 1 & 2 TOGETHER AND CUT OUT THE HOLES. GLUE THE PLAYGROUND BOTTOM TOGETHER BUT DON'T CUT OUT THE HOLES.

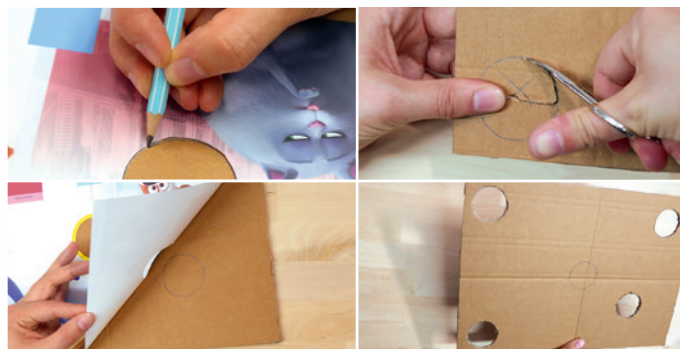
TIP: IF YOU USE A NAIL SCISSOR IT IS MUCH EASIER TO CUT OUT THE CIRCLES.



4.



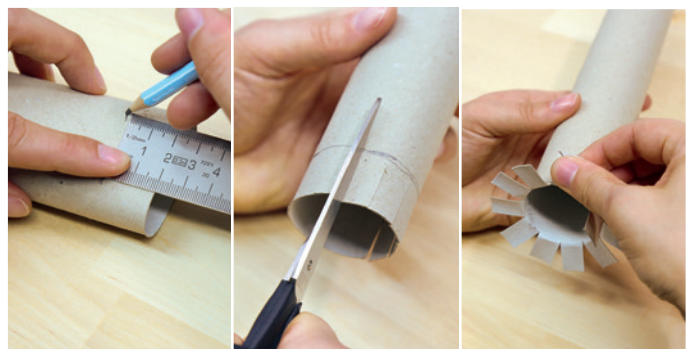
TRACE THE CUT OUT CIRCLES ON TO ONE OF THE SOLID CARDBOARD BOXES. CUT OUT ALL EXCEPT THE MIDDLE CIRCLE. **TIP:** IF YOU USE A NAIL SCISSOR IT IS MUCH EASIER TO CUT OUT THE CIRCLES.



5.




NOW MARK THE PAPER ROLL AT THE LOWER EDGE AT 2 CM AND CUT THEM ONCE AROUND. FOLD THE FLAPS OUTWARDS.



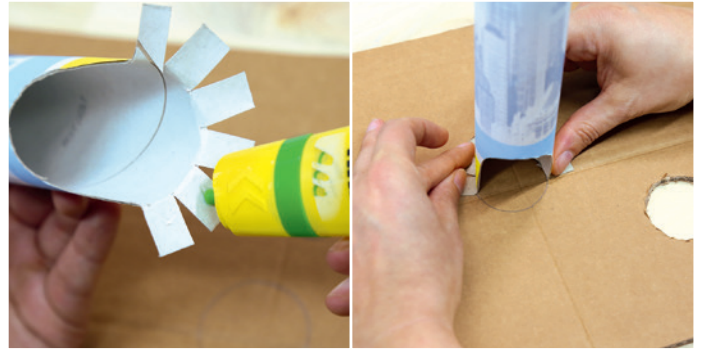
The Secret Life of Pets 2 © 2019 Universal Studios. All Rights Reserved.

HOW TO CREATE YOUR PETS 2 SKILL TOUR

6.  GLUE THE JOYSTICK DESIGN ON THE PAPER ROLL AND CUT OUT THE OPENING OF THE ROLL.



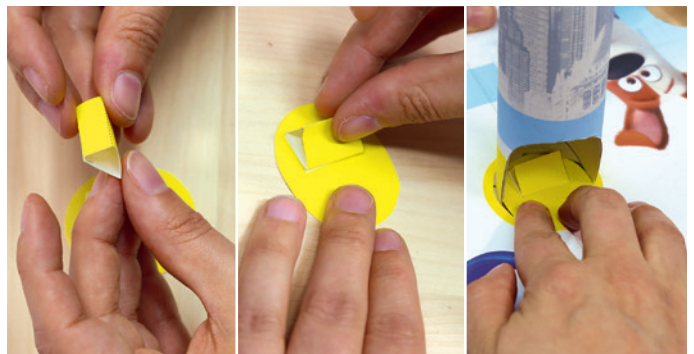
7. GLUE THE JOYSTICK ON THE CIRCLE MARK IN THE MIDDLE OF THE PLAYING SURFACE YOU MADE IN STEP 4.



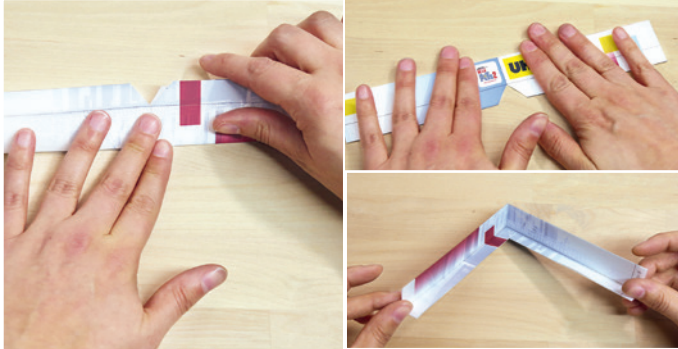
8. SLIP THE MIDDLE HOLE OF THE TOP PLAYING SURFACE OVER THE JOYSTICK AND GLUE THE PLAYING SURFACE TO THE CARDBOARD. GLUE THE PLAYGROUND BOTTOM TO THE OTHER SOLID CARDBOARD, TOO.



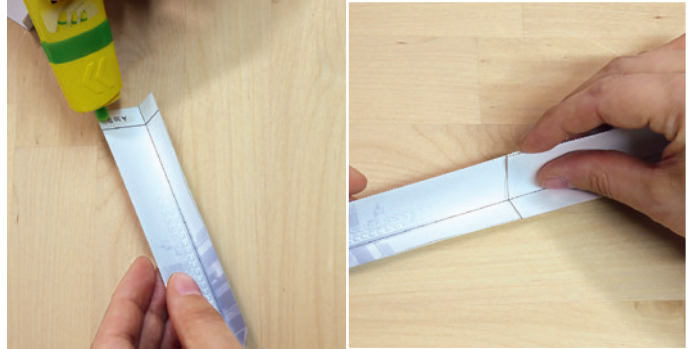
9. FOLD THE RAMP AND GLUE IT TOGETHER. THEN GLUE THE RAMP ONTO THE YELLOW JOYSTICK BOTTOM SURFACE. THEN STICK THE ITEM ON THE BOTTOM IN THE PAPER ROLL.



10. FOLD ALL BORDER PARTS (CORNERS & SIDE PIECES) IN THE MIDDLE AND STICK THEM TOGETHER. FOLD THE GLUED PART TO THE MARK AGAIN.



11. NOW STICK TOGETHER THE 6 BORDER PARTS FROM A TO F AT THE MARKED POINTS UNTIL A CLOSED SHAPE IS CREATED.

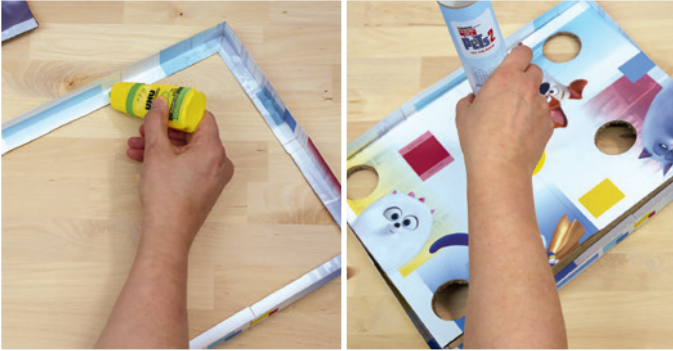


The Secret Life of Pets 2 © 2019 Universal Studios. All Rights Reserved.

HOW TO CREATE YOUR PETS 2 SKILL TOUR

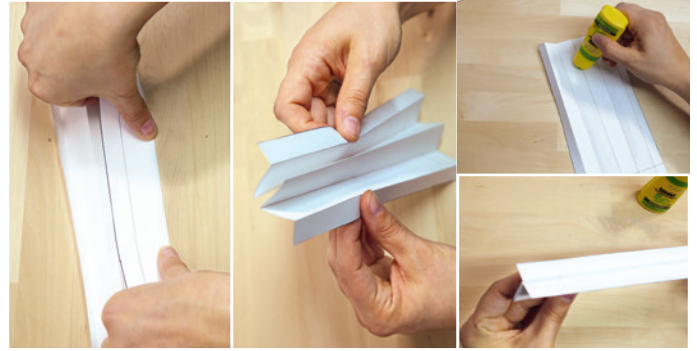
12.

GLUE THE BORDER AND THE TOP PLAYING SURFACE TOGETHER BY STICKING IT TO THE UNDERSIDE OF YOUR CARDBOARD.



13.

FOLD THE TOP HOLDER IN A ZIG ZAG WAY, SO YOU CREATE A WAVE SHAPE. THEN UNFOLD YOUR PAPER AND GLUE THE INNER SIDES TOGETHER.



14.

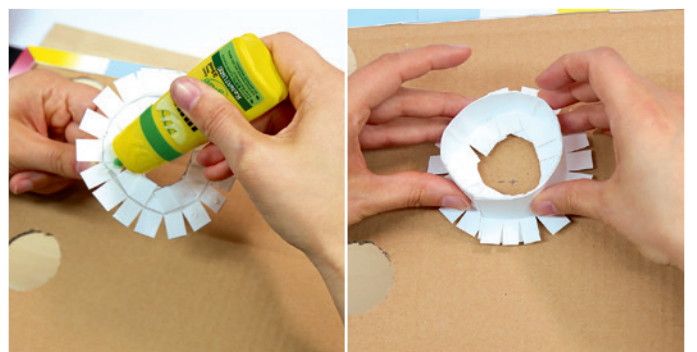


CUT IN THE NARROW AREA AT REGULAR INTERVALS. THEN CREATE A CIRCLE AND GLUE IT TOGETHER. FOLD THE TABS IN AND OUT.



15.

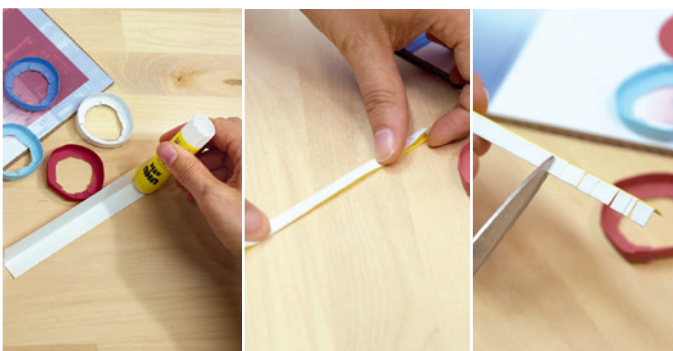
ON THE UNDERSIDE OF THE UPPER PLAYING SURFACE, MARK THE MIDDLE AND GLUE THE FINISHED TOP HOLDER IN THE CENTER OVER THE MARKING.



16.

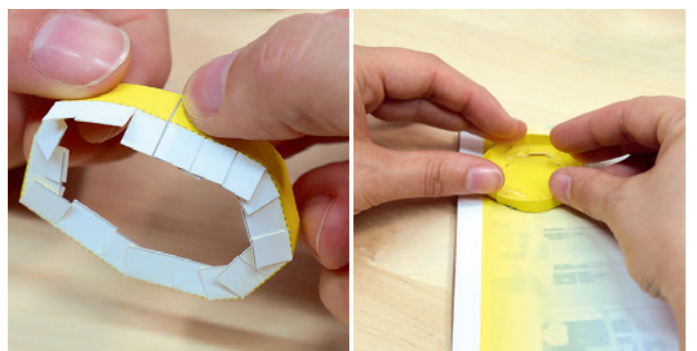


FOLD THE CATCHER RINGS IN THE MIDDLE AND STICK THEM TOGETHER. THEN FOLD THE WHITE PART BACKWARDS AND CUT IN EVENLY SPACED INTERVALS.



17.

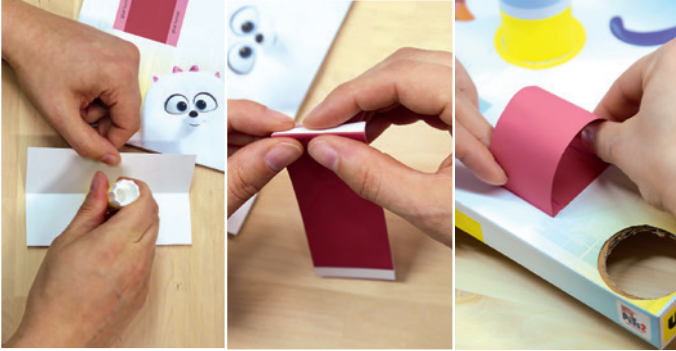
GLUE THE FORM TOGETHER AND GLUE IT ON TO THE APPROPRIATE COLORED CIRCLES OF THE PLAYGROUND BOTTOM.



HOW TO CREATE YOUR PETS 2 SKILL TOUR

18.

FOLD THE TUNNEL IN THE MIDDLE AND GLUE IT TOGETHER. FOLD DOWN THE TABS AND GLUE THEM ONTO THE MARKINGS ON THE TOP PLAYING SURFACE.



19.

GLUE THE UHU STICS TOGETHER AND CUT THEM ONCE AROUND. FOLD THE FLAPS INWARDS. AND THEN STICK THEM TO THE TOP PLAYGROUND LIKE THE OTHER UHU PRODUCTS.



20.

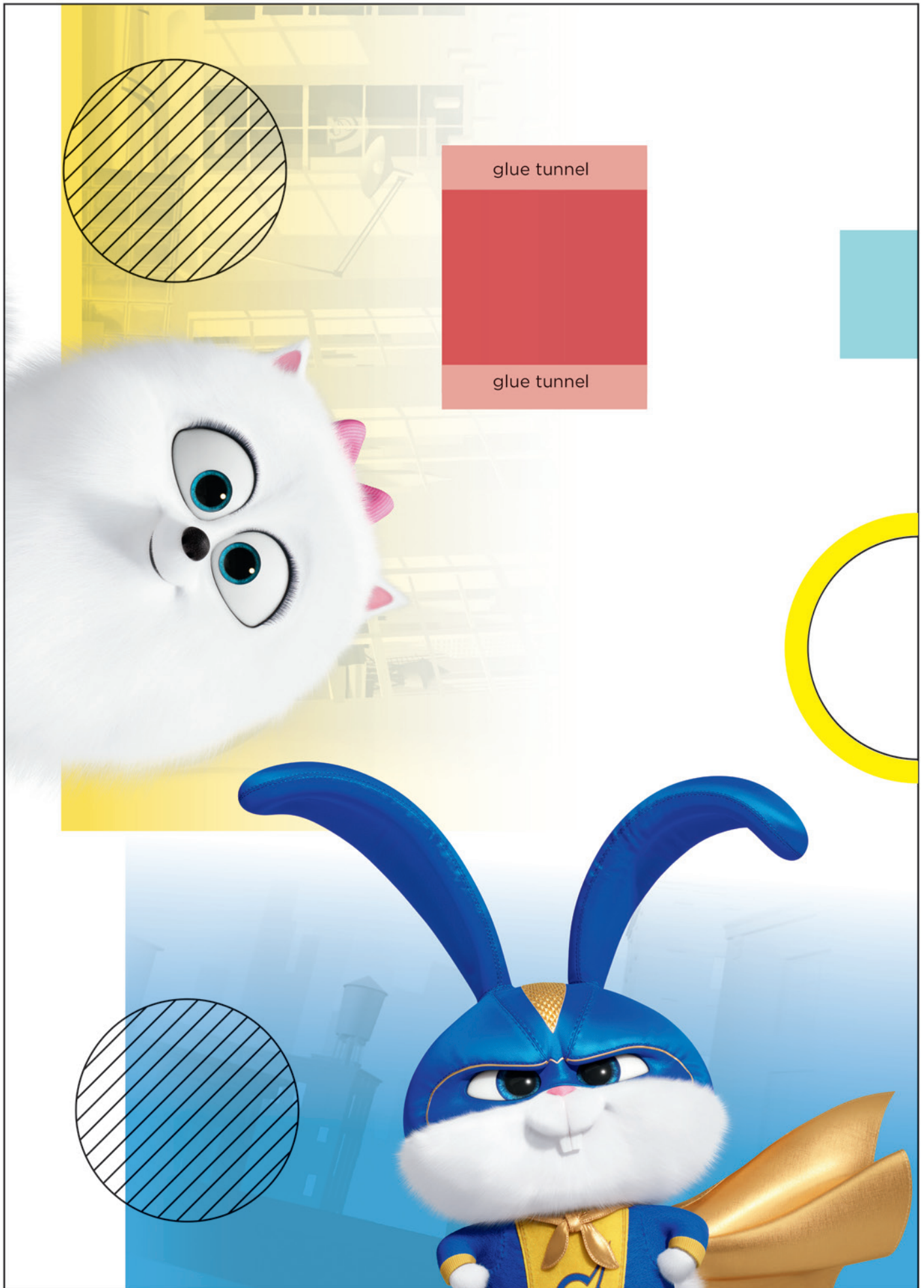
YOU ARE ALMOST FINISHED. PUT THE BIGGER BALL IN THE WHITE CATCHER RING, PUT THE TOP OF THE PLAYGROUND OVER THE BALL WITH THE TOP HOLDER.



21.

YOU ARE READY!
NOW YOU CAN TRAIN YOUR SKILL WITH YOUR PETS 2 FRIENDS!



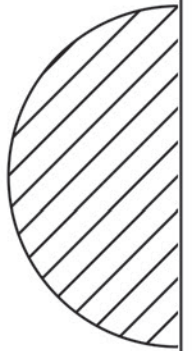


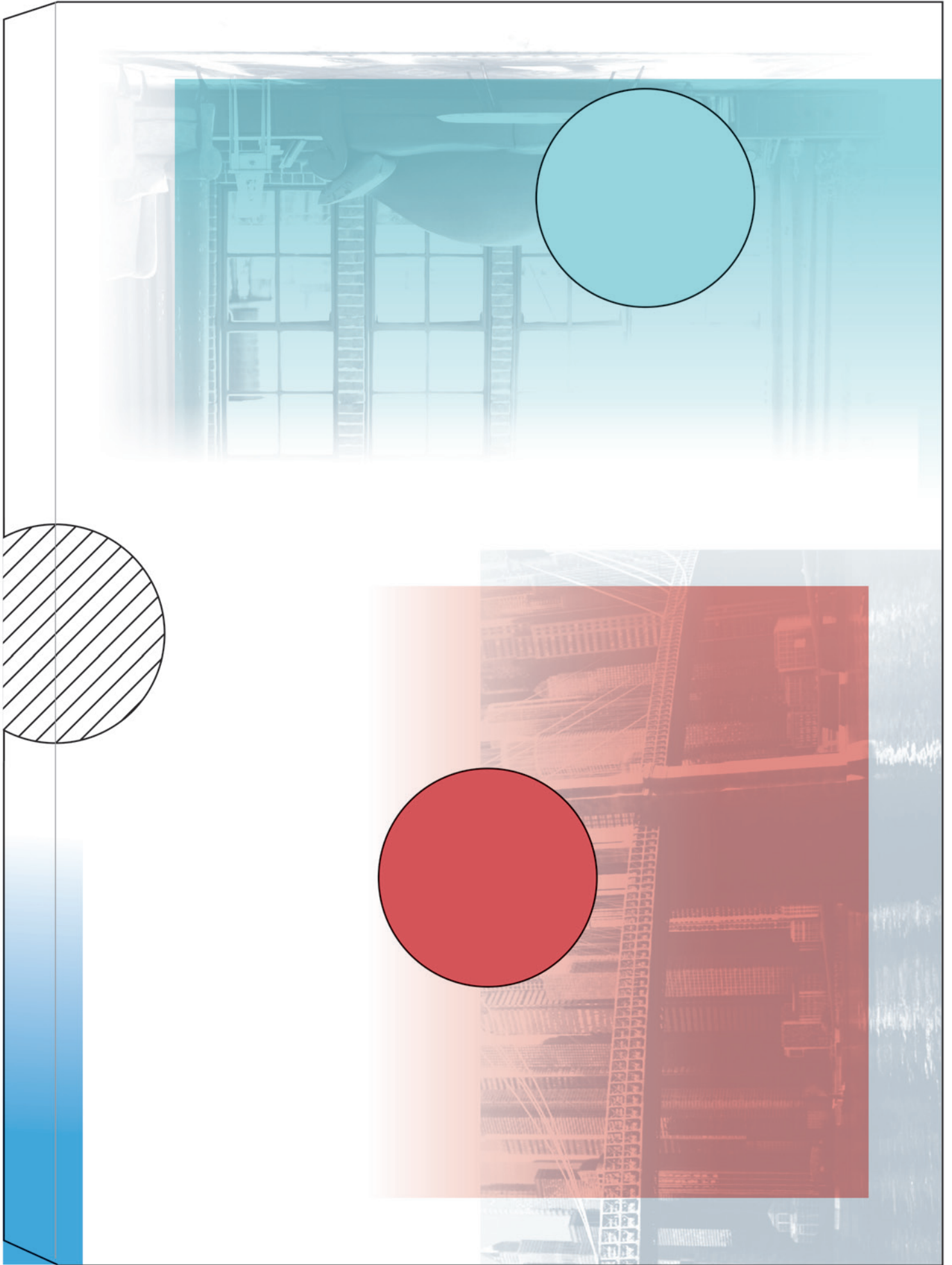
glue tunnel

glue tunnel

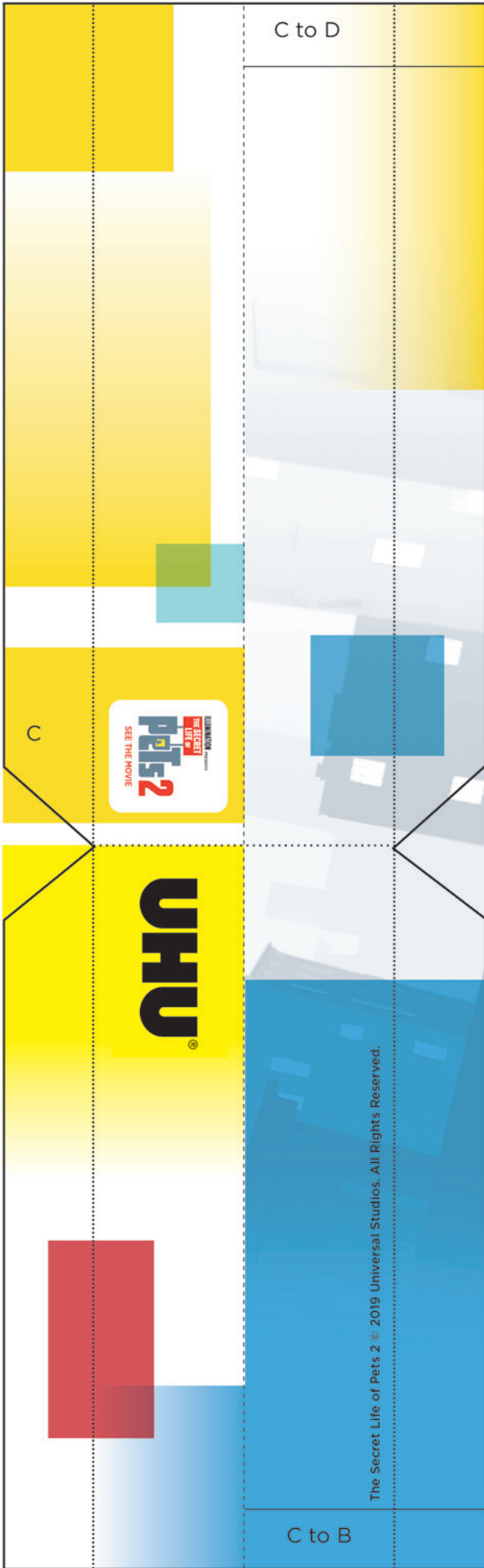


Playground Top Part 2

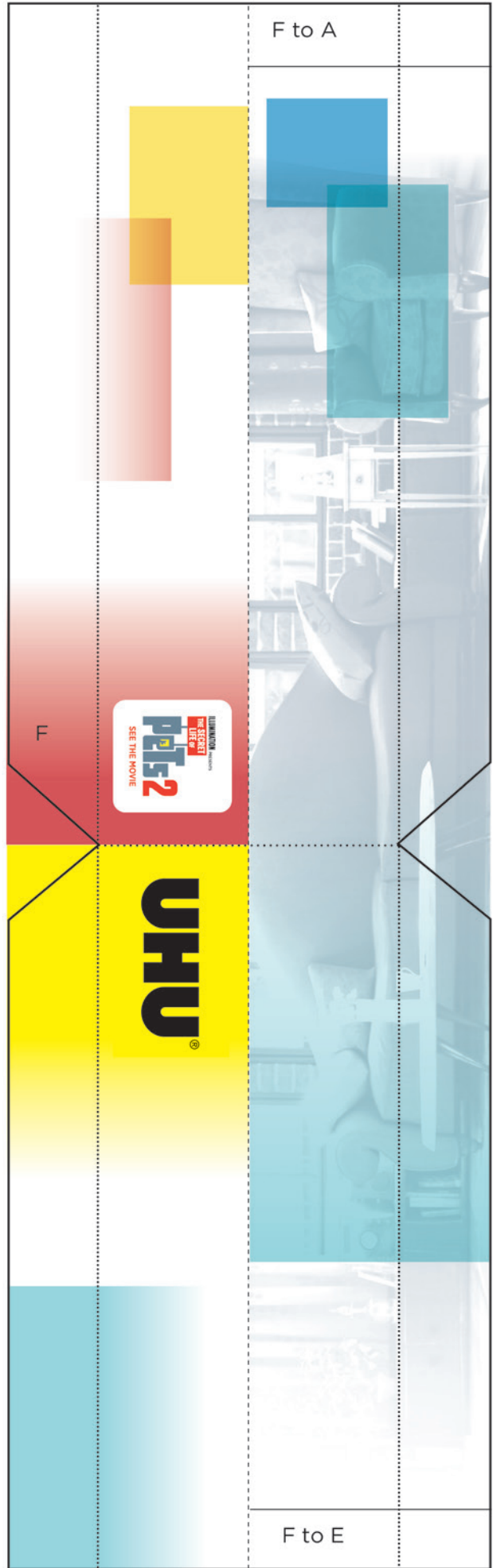




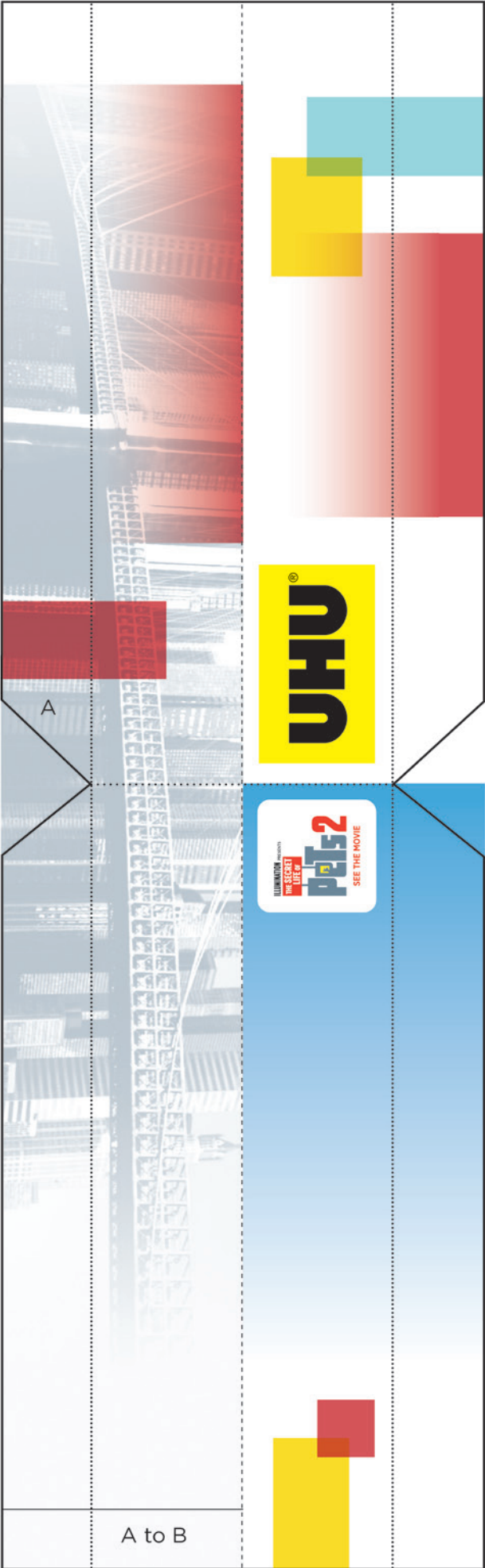
Playground Bottom Part 2



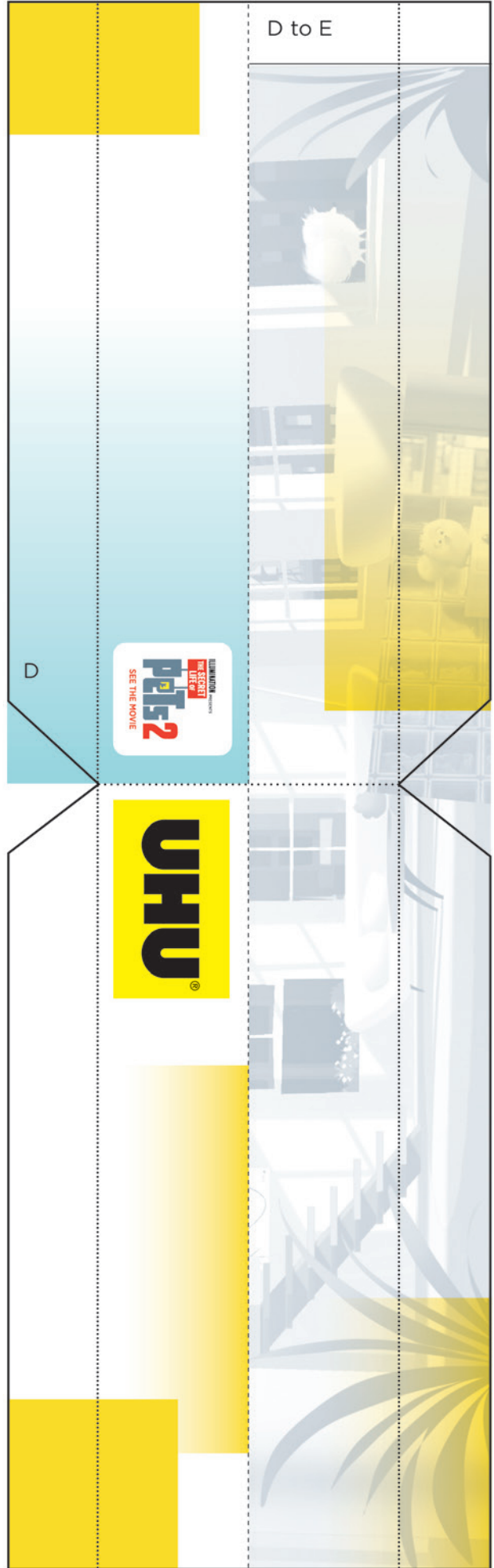
Corner **C**



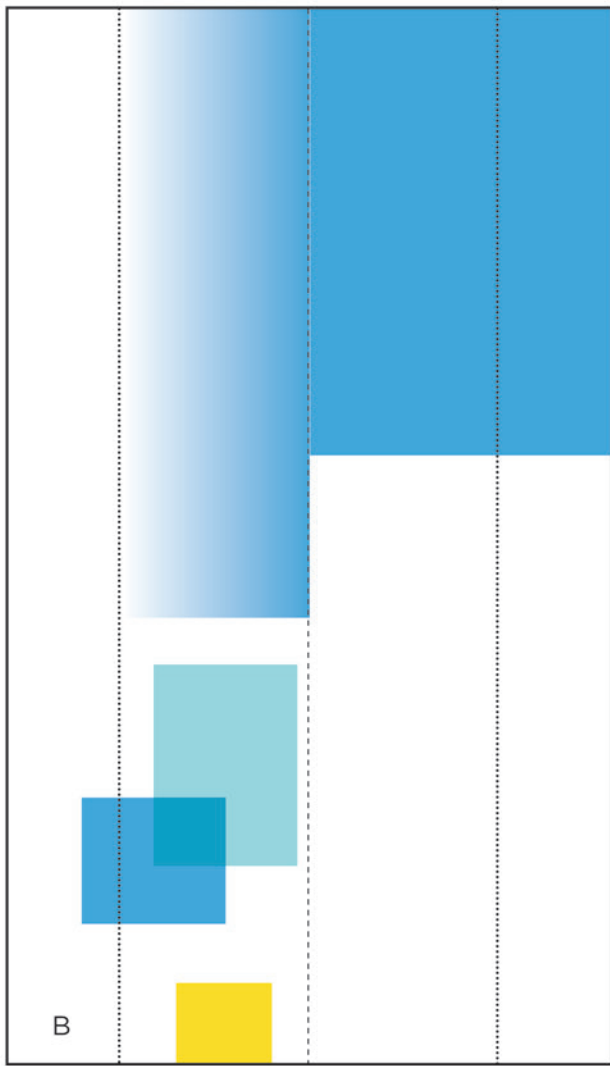
Corner **F**



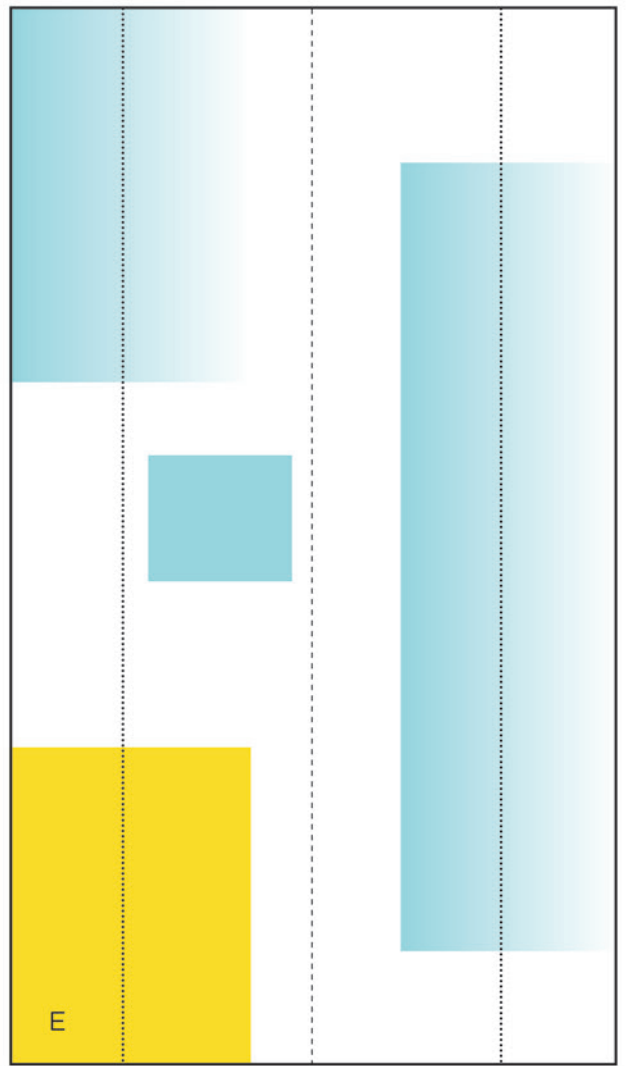
Corner **A**



Corner **D**

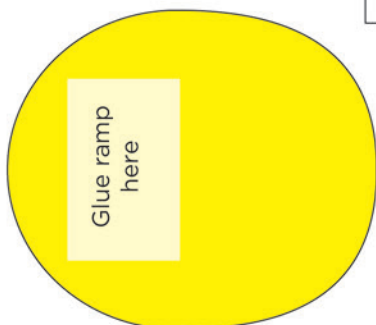
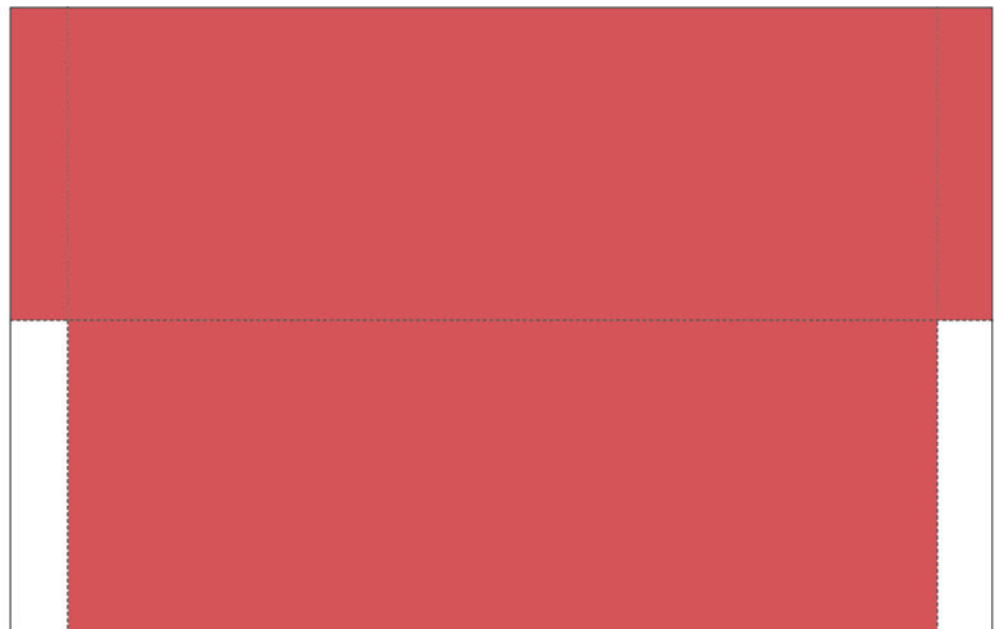


Side panel **B**

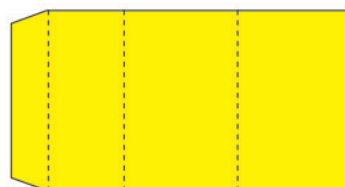


Side panel **E**

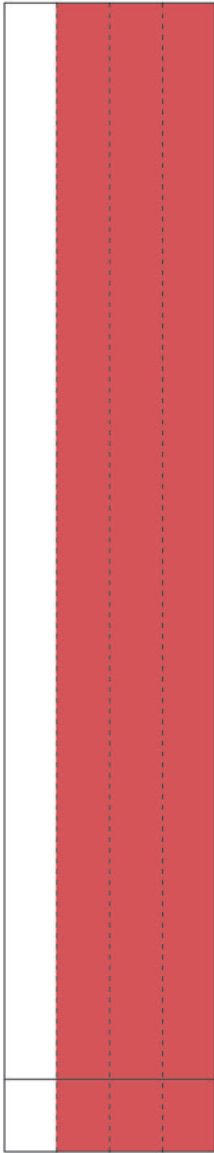
tunnel



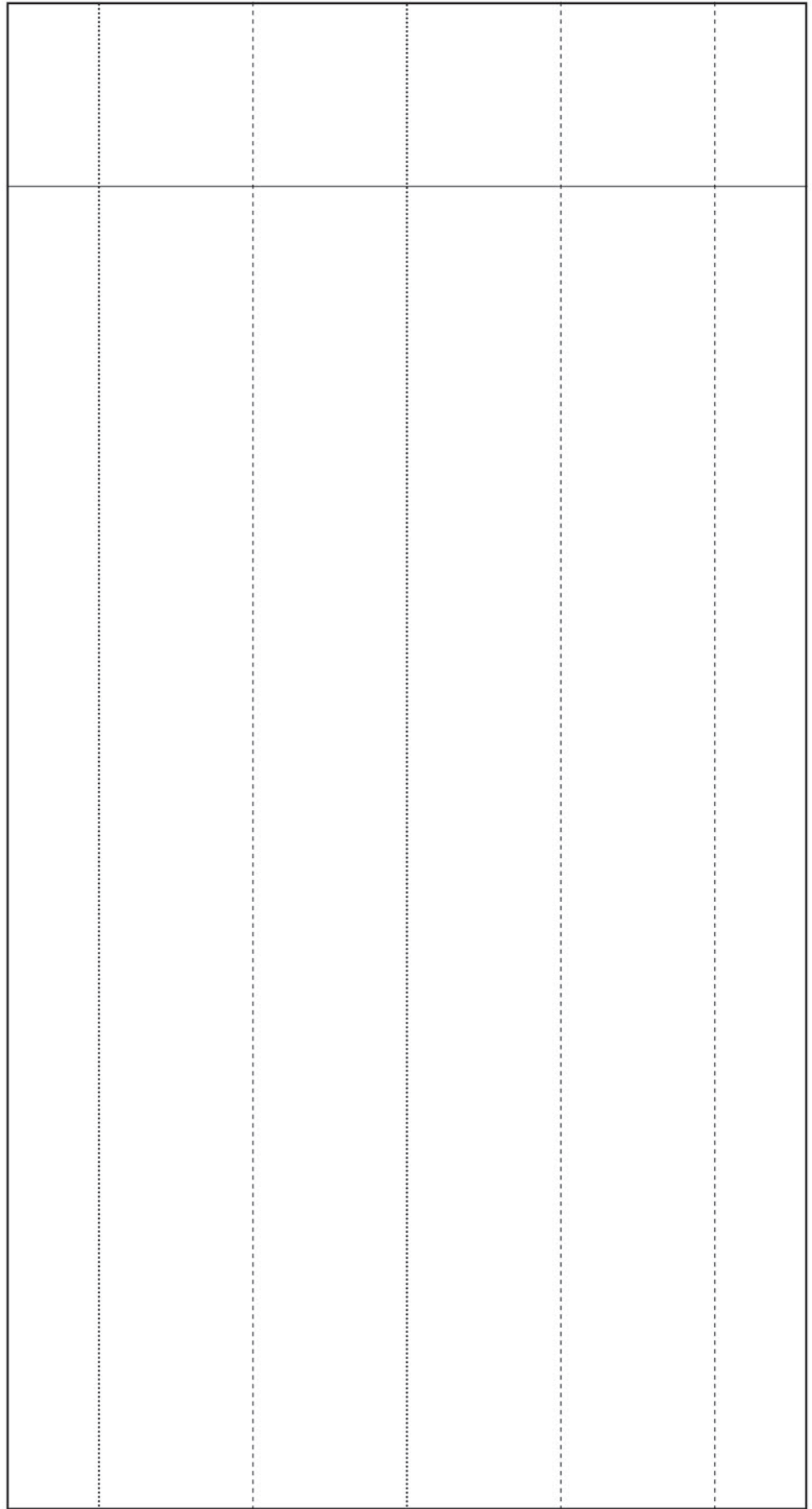
Bottom joystick



ramp

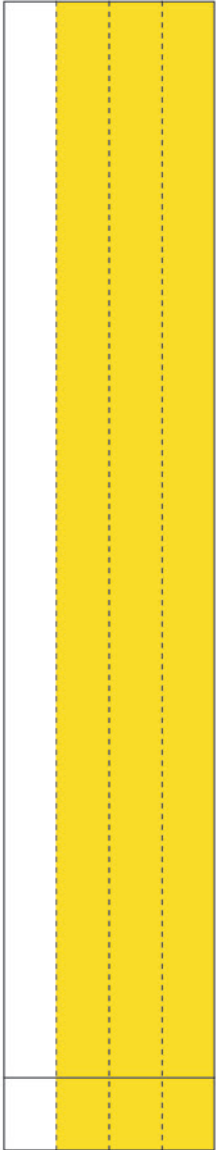


Catcher ring



Top Holder of the ball under the playground

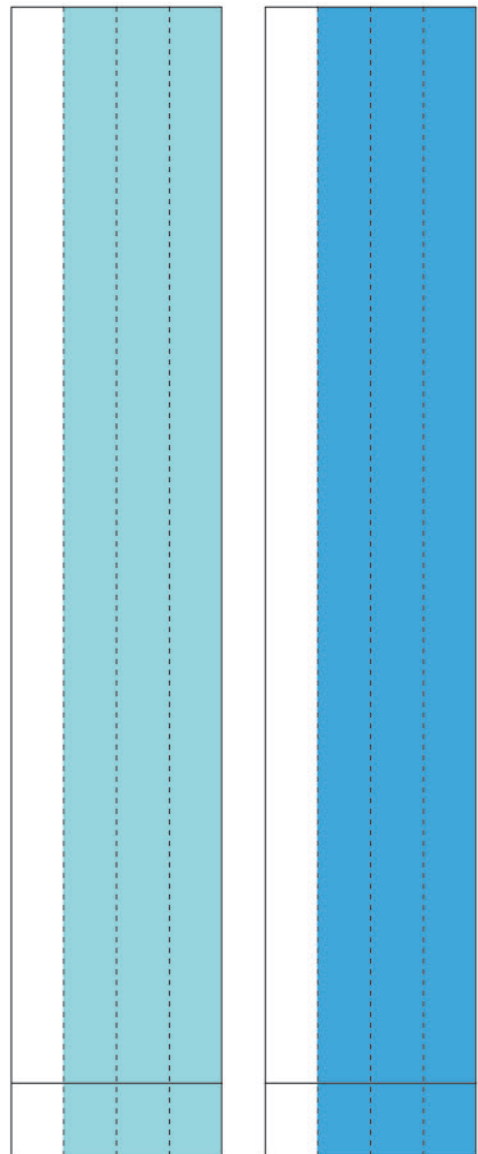
Catcher ring



Joystick Layout



Catcher rings



Middle catcher rings

